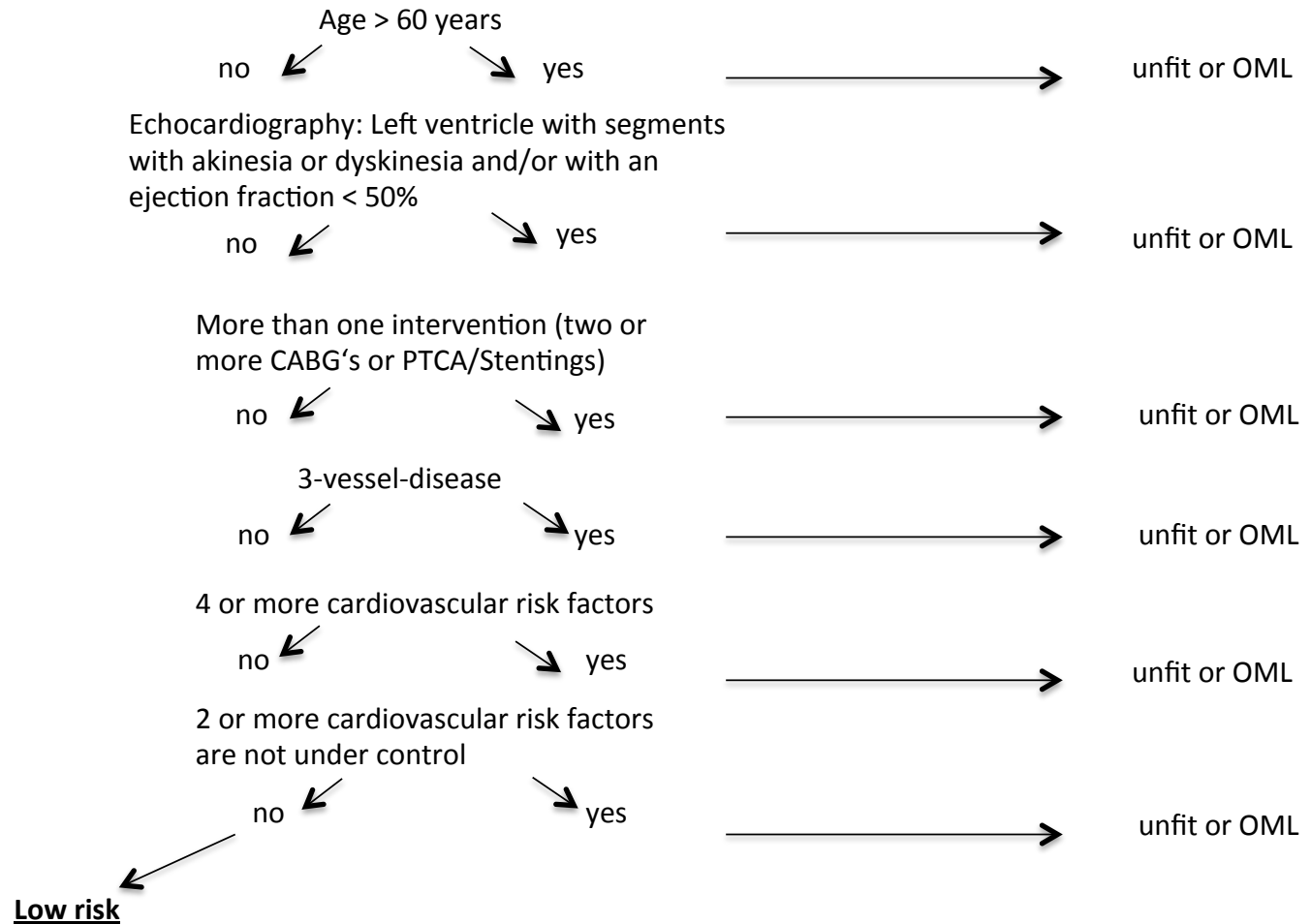


**Algorithm for the risk assessment of class 1-pilots who have had a coronary artery event or intervention into a low and a higher risk category (those being in the low risk category would be allowed to fly without OML-limitation).**

The basis remains that the pilot is declared unfit to fly for six months after a coronary artery intervention, and that the reassessment is performed only six months after the intervention, and that at this time the requirements of the AMC Section 2, Specific requirements for class 1 medical certificates, AMC1 MED.B.010 Cardiovascular system (k) Coronary artery disease, section (4), must be fulfilled.

---

**Part I: After coronary artery bypass grafting (CABG)**



**Algorithm for the risk assessment of class 1-pilots who have had a coronary artery event or intervention into a low and a higher risk category (those being in the low risk category would be allowed to fly without OML-limitation).**

The basis remains that the pilot is declared unfit to fly for six months after a coronary artery intervention, and that the reassessment is performed only six months after the intervention, and that at this time the requirements of the AMC Section 2, Specific requirements for class 1 medical certificates, AMC1 MED.B.010 Cardiovascular system (k) Coronary artery disease, section (4), must be fulfilled.

---

**Part II: After PTCA/Stentings**

